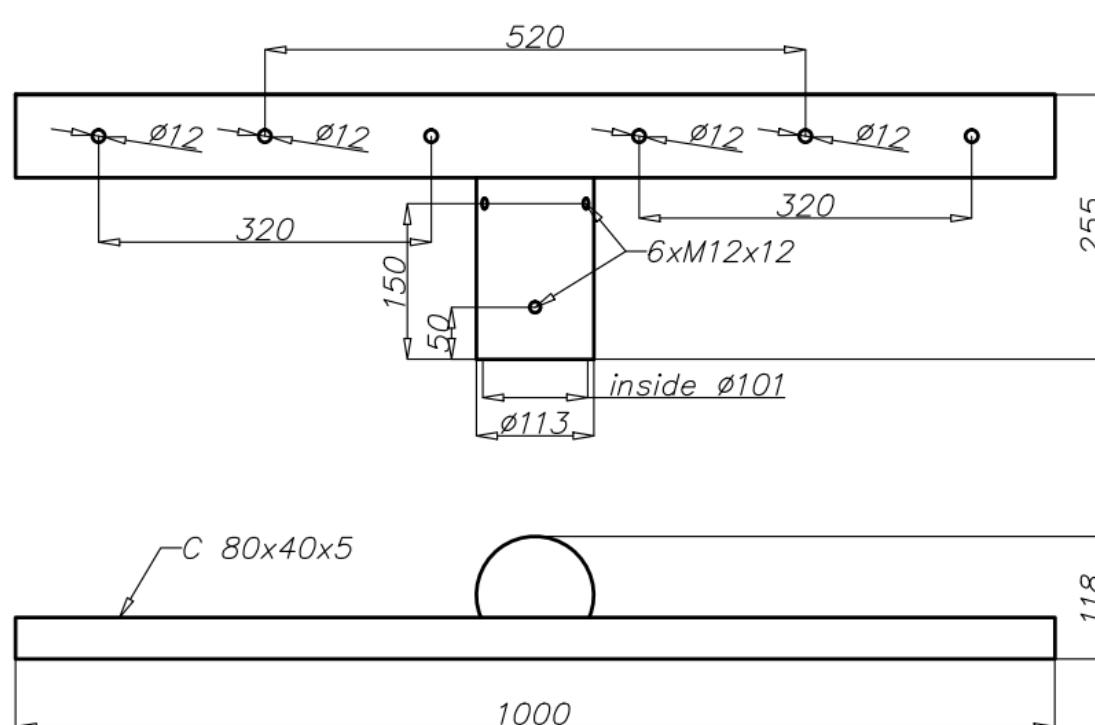
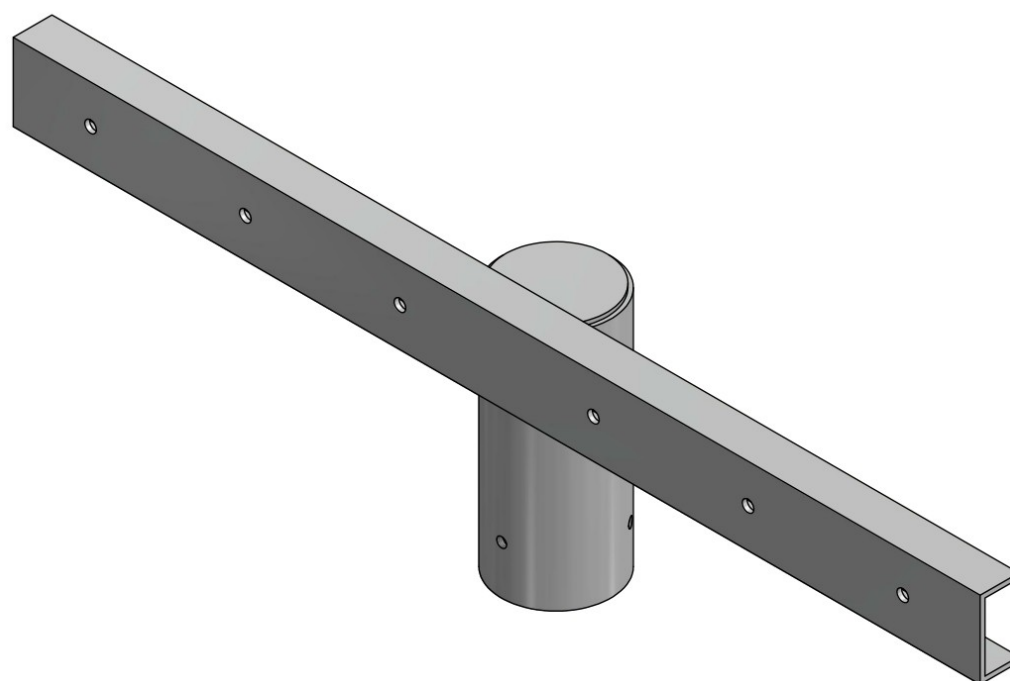


# Aluminium extension arm WM-21



## Technical data

Extension arm	WM-21
Product code	474210
Application	aluminium light masts with ending $\varnothing 100 \times 180$
Arm quantity	2
Net weight [kg]	3,7
Windage [m <sup>2</sup> ]	0,1
Volume [m <sup>3</sup> ]	0,02
Assembling diameter of luminaire $\varnothing$ [mm]	x
Compatible luminaires	projectors

- anodising in 10 colours, each with possibility of brightening
- option of powder painting in RAL colours (other colours available on request)
- packing: sleeve material
- CE certificate valid for use on poles manufactured by ROSA company