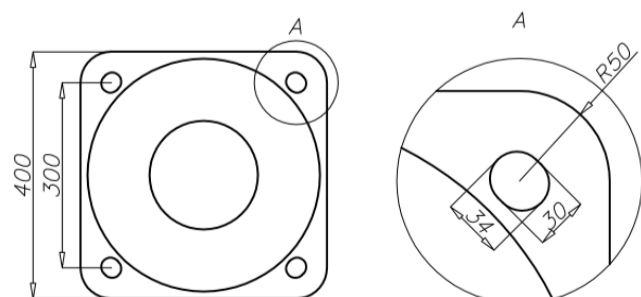
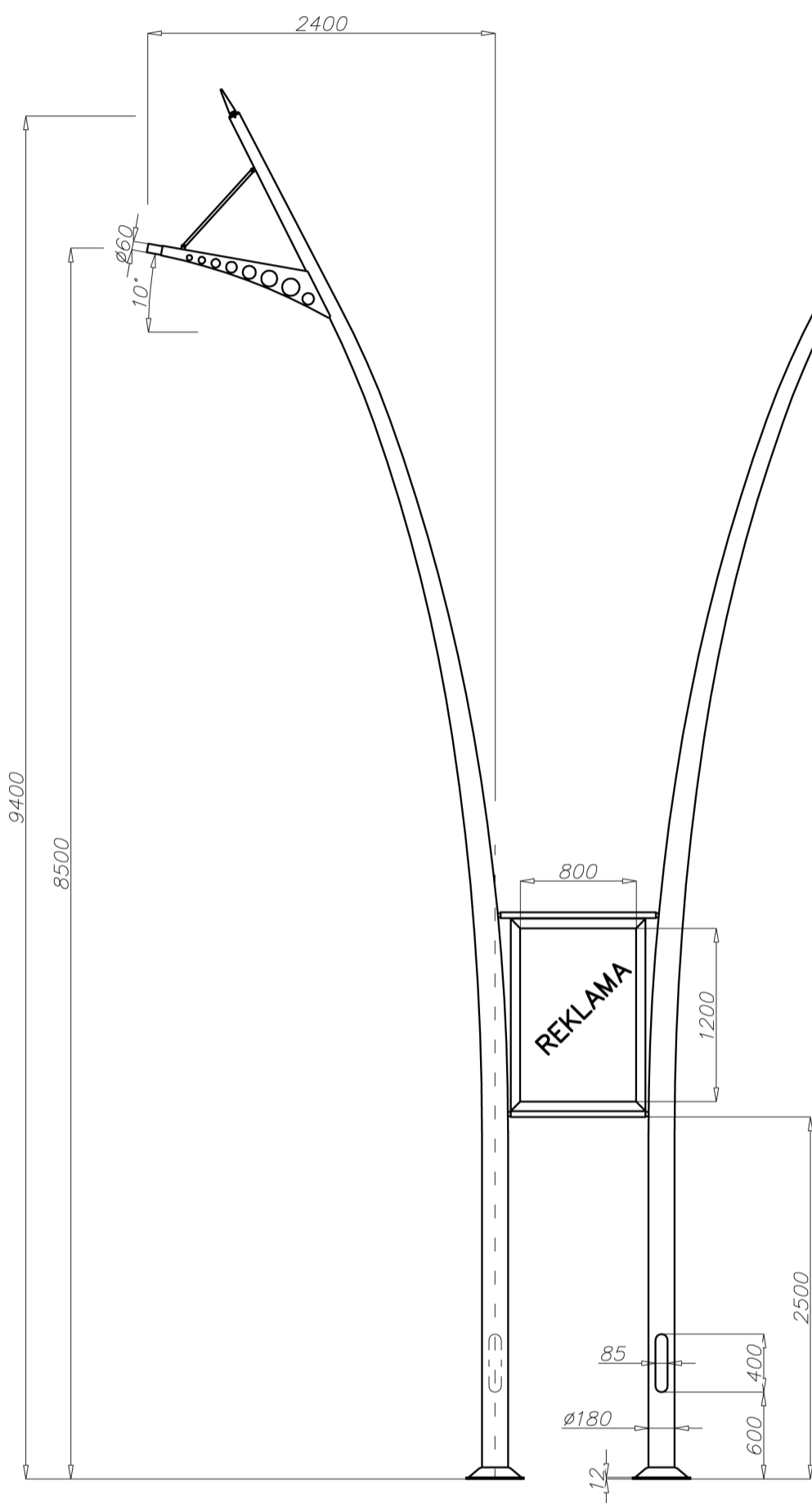


# Aluminium column SAL DB

diameter 180 mm at the base plate



## Technical data

Aluminium Column	SAL DB
Product code	42992
Column height H [m]	9,4
Wall thickness [mm]	4,3
Net weight [kg]	142,6
Orientacyjna objętość jednostkowa [m <sup>3</sup> ]	3,86
Post top column	luminaires with Ø60 spigot entry with weight and windage not exceeding data in resistance calculations
Concrete footing / reinforcement basket	B-70 / Z-70
Concrete footing code / reinforcement basket code	311170/ 311207
Hot galvanized nut set / Hot galvanized ripable nut set	4012 / 4013

## Resistance calculations

SAL DB code 42992	acceptable windage of single luminaires [m <sup>2</sup> ] for C <sub>x</sub> =0,7			
	Vref. = 22 m/s	Vref. = 24 m/s	Vref. = 26 m/s	Vref. = 28 m/s
acceptable mass of a single luminaire [kg]	I zone, IV location category	I and III zone, IV location category to 450 m AMSL	II zone, IV location category	III zone, IV location category to 755 m AMSL
15	0,52	0,31	x	x

SAL DB kod 42992	acceptable windage of single luminaires [m <sup>2</sup> ] for C <sub>x</sub> =0,7			
	Vref. = 22 m/s	Vref. = 24 m/s	Vref. = 26 m/s	Vref. = 28 m/s
acceptable mass of a single luminaire [kg]	I zone, III location category	I and III zone, III location category to 450 m AMSL	II zone, III location category	III zone, III location category to 755 m AMSL
15	0,28	0,11	x	x

- surface: polished aluminium
- anodising in 10 colours, each with possibility of brightening
- option of powder painting in RAL colours (other colours available on request)
- elastomer protection option in the color of the column to a height of 350 mm (other height on request)
- ROSA standard wiring chamber
- packing: sleeve material
- option connect decorative light top