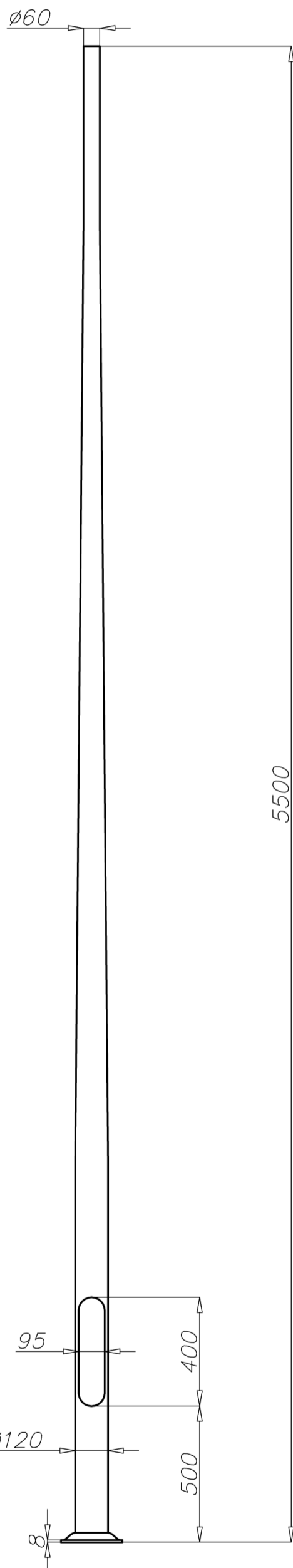


Aluminium column SAL-5,5

diameter 120 mm at the base plate



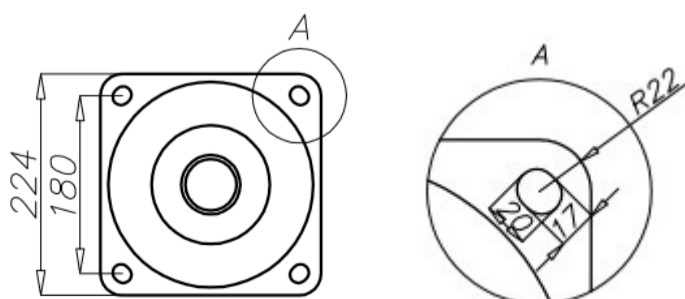
Technical data

Aluminium Column	SAL-5,5
Product code	42205
Column height H [m]	5,5
Wall thickness [mm]	4
Net weight [kg]	19
Orientacyjna objętość jednostkowa [m ³]	0,123
Post top column	luminaires with Ø60 spigot entry with weight and windage not exceeding data in resistance calculations
Compatible extension arms	according to resistance calculations
Concrete footing / reinforcement basket	B-50 / Z-50
Concrete footing code/reinforcement basket code	311150 / 311205
Hot galvanized nut set /Hot galvanized ripable nut set	4006 / 4007

Resistance calculations

SAL-5,5 code 42205		acceptable windage of single luminaire [m ²] for C _x =0,7			
		V _{ref.} = 22 m/s	V _{ref.} = 24 m/s	V _{ref.} = 26 m/s	V _{ref.} = 28 m/s
extension arm type	acceptable weight of single luminaire	I zone, II location category	I and III zone, II location category to 450m AMSL	II zone, II location category	III zone, II location category to 755m AMSL
WA-01	10	0,42	0,32	0,18	0,14
WA-1	10	0,43	0,33	0,2	0,16
WA-2	10	0,35	0,25	x	x
WA-4	10	0,22	0,14	x	x
WA-5/1	10	0,21	0,15	x	x
WA-8/1	10	0,25	0,18	x	x
WA-11/1	10	0,21	0,15	x	x
WA-14/1	10	0,23	0,17	x	x
WA-15/1 P	10	0,27	0,20	x	x
WR-1/1	15	0,27	0,22	0,14	x
WR-4/1	15	0,24	0,19	x	x
WN-1	15	0,32 (C _x =1)	0,25 (C _x =1)	0,16 (C _x =1)	0,13 (C _x =1)
WN-2	8	0,15 (C _x =1)	0,12 (C _x =1)	x	x

SAL-5,5 code 42205		acceptable windage of single luminaires [m ²] for C _x =1			
		V _{ref.} = 22 m/s	V _{ref.} = 24 m/s	V _{ref.} = 26 m/s	V _{ref.} = 28 m/s
acceptable mass of luminaires and extension arms [kg]		I zone, II location category	I and III zone, II location category to 450m AMSL	II zone, II location category	III zone, II location category to 755m AMSL
20		0,36	0,29	0,2	0,17



- surface: polished aluminium
- anodising in 10 colours, each with possibility of brightening
- option of powder painting in RAL colours (other colours available on request)
- elastomer protection in the color of the column to a height of 350 mm (other height on request)
- ROSA standard wiring chamber
- packing: sleeve material
- passive safety certificate 100NE2