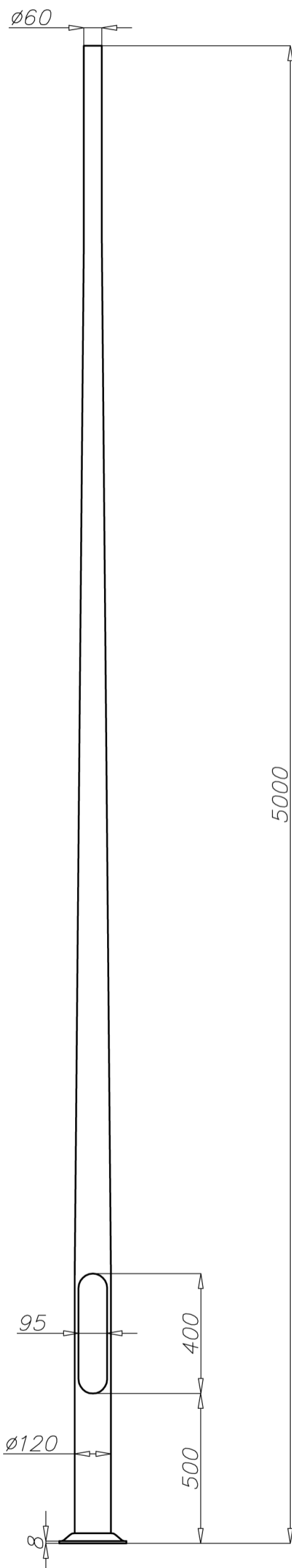


Aluminium column SAL-5

diameter 120 mm at the base plate



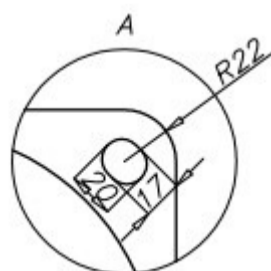
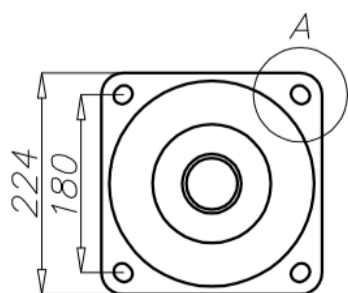
Technical data

Aluminium Column	SAL-5
Product code	42203
Column height H [m]	5
Wall thickness [mm]	4
Net weight [kg]	16,9
Volume [m ³]	0,112
Post top column	luminaires with $\varnothing 60$ spigot entry with weight and windage not exceeding data in resistance calculations
Compatible extension arms	according to resistance calculations
Concrete footing / reinforcement basket	B-50 / Z-50
Concrete footing code/reinforcement basket code	311150 / 311205
Hot galvanized nut set /Hot galvanized ripable nut set	4006 / 4007

Resistance calculations

SAL-5 code 42203		acceptable windage of single luminaire [m ²] for Cx=0,7			
		Vref. = 22 m/s	Vref. = 24 m/s	Vref. = 26 m/s	Vref. = 28 m/s
extension arm type	acceptable weight of single luminaire	I zone, II location category	I and III zone, II location category to 450m AMSL	II zone, II location category	III zone, II location category to 755m AMSL
WA-01	10	0,58	0,46	0,3	0,26
WA-1	10	0,6	0,48	0,32	0,27
WA-2	10	0,44	0,34	0,2	0,16
WA-4	10	0,34	0,25	x	x
WA-5/1	10	0,3	0,23	0,14	x
WA-8/1	10	0,35	0,27	0,16	0,13
WA-11/1	10	0,3	0,23	0,13	x
WA-14/1	10	0,34	0,26	0,16	0,13
WA-14/2	8	0,14	x	x	x
WA-15/1 P	10	0,35	0,27	0,17	0,13
WR-1/1	15	0,35	0,28	0,2	0,17
WR-4/1	15	0,31	0,25	0,17	0,15
WN-1	15	0,42 (Cx=1)	0,34 (Cx=1)	0,24 (Cx=1)	0,21 (Cx=1)
WN-2	8	0,21 (Cx=1)	0,17 (Cx=1)	0,12 (Cx=1)	0,1 (Cx=1)

SAL-5 code 42203		acceptable windage of luminaires and extension arms [m ²] for Cx=1			
		Vref. = 22 m/s	Vref. = 24 m/s	Vref. = 26 m/s	Vref. = 28 m/s
acceptable mass of luminaires and extension arms [kg]		I zone, II location category	I and III zone, II location category to 450m AMSL	II zone, II location category	III zone, II location category to 755m AMSL
20		0,48	0,40	0,29	0,25



- surface: polished aluminium
- anodising in 10 colours, each with possibility of brightening
- option of powder painting in RAL colours (other colours available on request)
- elastomer protection in the color of the column to a height of 350 mm (other height on request)
- ROSA standard wiring chamber
- packing: sleeve material
- passive safety certificate 100NE2