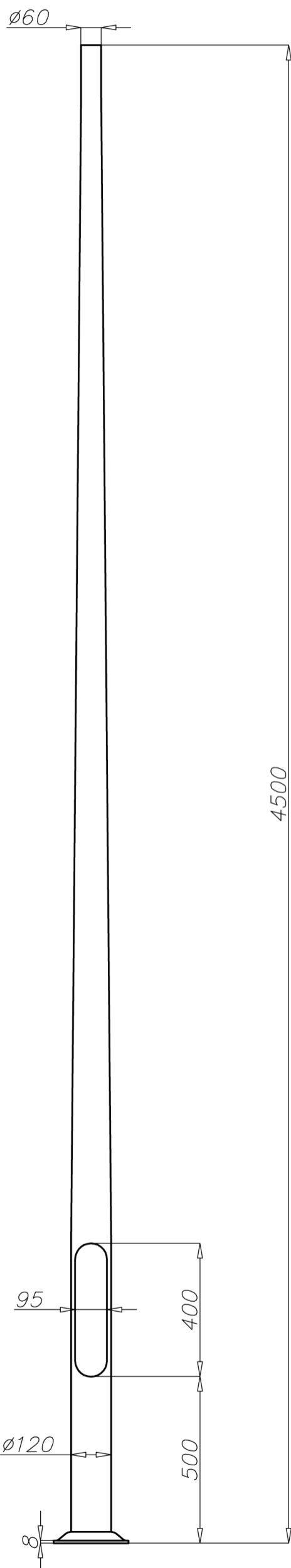


Aluminium column SAL-4,5

diameter 120 mm at the base plate



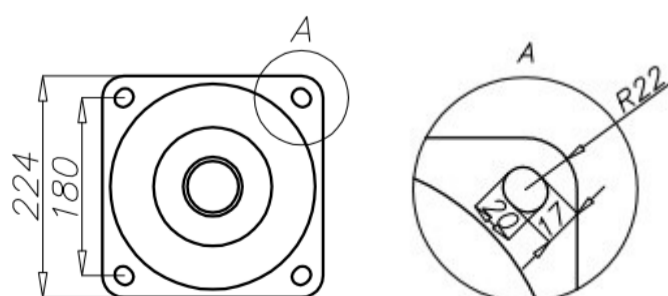
Technical data

Aluminium Column	SAL-4,5
Product code	42202
Column height H [m]	4,5
Wall thickness [mm]	4
Net weight [kg]	15,9
Volume [m ³]	0,101
Post top column	luminaires with Ø60 spigot entry with weight and windage not exceeding data in resistance calculations
Compatible extension arms	according to resistance calculations
Concrete footing / reinforcement basket	B-50 / Z-50
Concrete footing code/reinforcement basket code	311150 / 311205
Hot galvanized nut set /Hot galvanized ripable nut set	4006 / 4007

Resistance calculations

SAL-4,5 code 42202		acceptable windage of single luminaire [m ²] for C _x =0,7			
		Vref. = 22 m/s	Vref. = 24 m/s	Vref. = 26 m/s	Vref. = 28 m/s
extension arm type	acceptable weight of single luminaire	I zone, II location category	I and III zone, II location category to 450m AMSL	II zone, II location category	III zone, II location category to 755m AMSL
WA-01	10	0,76	0,62	0,44	0,38
WA-1	10	0,78	0,64	0,45	0,40
WA-2	10	0,59	0,47	0,31	0,27
WA-4	10	0,49	0,38	0,23	0,19
WA-5/1	10	0,37	0,29	0,2	0,17
WA-5/2	8	0,18	0,13	x	x
WA-8/1	10	0,45	0,36	0,24	0,21
WA-8/2	8	0,19	0,13	x	x
WA-11/1	10	0,41	0,32	0,21	0,17
WA-11/2	8	0,22	0,15	x	x
WA-14/1	10	0,44	0,35	0,24	0,20
WA-14/2	8	0,22	0,16	x	x
WA-15/1 P	10	0,46	0,37	0,25	0,21
WR-1/1	15	0,44	0,36	0,26	0,23
WR-4/1	15	0,38	0,32	0,23	0,20
WN-1	15	0,51 (C _x =1)	0,45 (C _x =1)	0,33 (C _x =1)	0,29 (C _x =1)
WN-2	8	0,27 (C _x =1)	0,22 (C _x =1)	0,16 (C _x =1)	0,14 (C _x =1)

SAL-4,5 code 42202		acceptable windage of luminaires and extension arms [m ²] for C _x =1			
		Vref. = 22 m/s	Vref. = 24 m/s	Vref. = 26 m/s	Vref. = 28 m/s
acceptable mass of luminaires and extension arms [kg]		I zone, II location category	I and III zone, II location category to 450m AMSL	II zone, II location category	III zone, II location category to 755m AMSL
20		0,61	0,51	0,38	0,34



- surface: polished aluminium
- anodising in 10 colours, each with possibility of brightening
- option of powder painting in RAL colours (other colours available on request)
- elastomer protection in the color of the column to a height of 350 mm (other height on request)
- ROSA standard wiring chamber
- packing: sleeve material
- passive safety certificate 100NE2